

# ACB Modified Pomegranate Enzyme PF

Exfoliation



Tomorrow's Vision... *Today!*®

# ACB Modified Pomegranate Enzyme PF

---



## **\*20440PF – ACB Modified Pomegranate Enzyme PF**

**Product Code:** 20440PF

**INCI Name:** Lactobacillus/Punica Granatum Fruit Ferment Extract

**INCI Status:** Conforms

**Suggested Use Level:** 1.0 - 10.0%

**Suggested Applications:** Exfoliation

# Proteolytic Enzymes

---



- Intact Chaperone Proteins
  - Acts as on/off switches to prevent irritation
  - Prevents Self-Breakdown to maximize shelf life
  - Prevents product discoloration overtime – due to the Maillard Reaction
  - Maillard Reaction – Discoloration overtime, due to the reaction between sugars and proteins
  
- 10,000 – 15,000 Da (enzyme molecular weight)

# ACB Modified Pomegranate Enzyme PF

---

## Benefits

- Smoothes & Softens
- Minimizes the appearance of fine lines
- Instant perceivable benefits
- Exfoliation – Allows for better absorption of actives
- Safe Alternative to Alpha Hydroxy Acids (AHA's)
- Perfect for Skin, Hair & Scalp Care Applications



# ACB Modified Pomegranate Enzyme PF

---

## Skin Care



- Exfoliation
  - Serves to remove the outer layer of dead skin cells that can trap bacteria & sebum

## Hair Care

- Removes buildup that can accumulate on the hair overtime

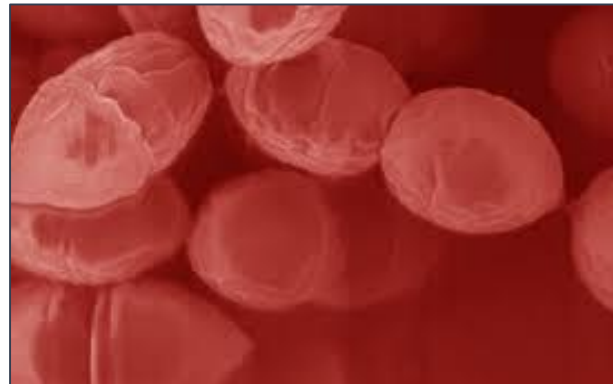
## Scalp Care

- Exfoliates the scalp to create an optimum environment for healthy hair

# ACB Modified Pomegranate Enzyme PF



- Sustainably Manufactured
  - Extracted from the unused residual fruit pulp
  - Along with the intact chaperone proteins – improved stability
- The macerated fruit is the fermented with *Lactobacillus lactis*
  - Desired Chemicals are readily available
  - Enhanced Benefits



# Efficacy Data

## Dansyl Chloride Assay

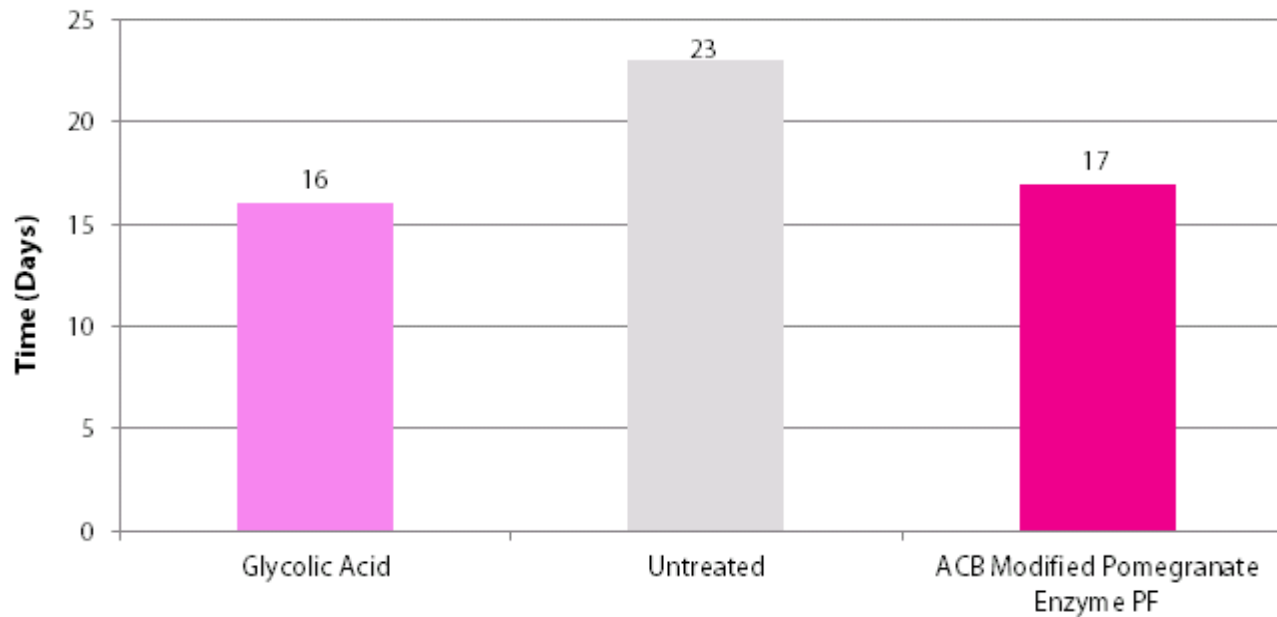


Material	Concentration	Days	% Cellular Renewal
Glycolic Acid	4%	16	28.6
Untreated Control	N/A	23	N/A
ACB Modified Pomegranate Enzyme PF	5%	17	26

Figure1: Test Materials.

# Efficacy Data

## Dansyl Chloride Assay



**Figure 2: ACB Modified Pomegranate Enzyme PF is comparable to Glycolic Acid at increasing the rate of cellular renewal.**



# ACB Modified Pomegranate Enzyme PF

---



## **\*20440PF – ACB Modified Pomegranate Enzyme PF**

**Product Code:** 20440PF

**INCI Name:** Lactobacillus/Punica Granatum Fruit Ferment Extract

**INCI Status:** Conforms

**Suggested Use Level:** 1.0 - 10.0%

**Suggested Applications:** Exfoliation

# ACB Modified Pomegranate Enzyme PF

---



**THANK YOU**

For more information –Visit our website!

[www.activeconceptsllc.com](http://www.activeconceptsllc.com)