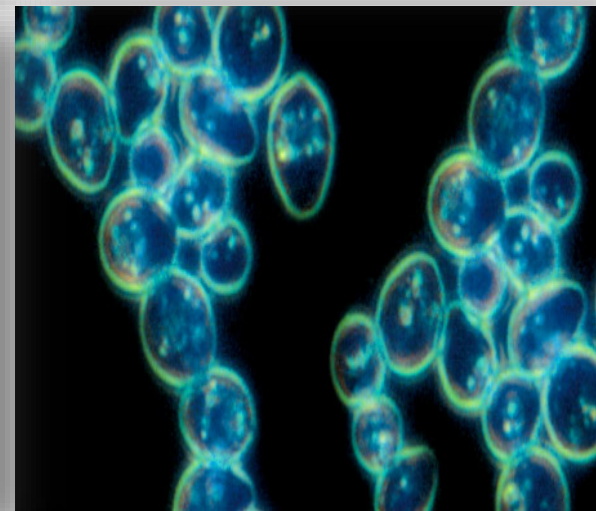
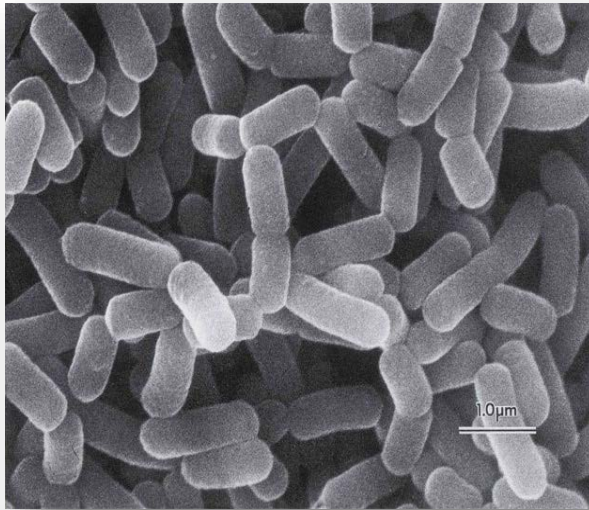


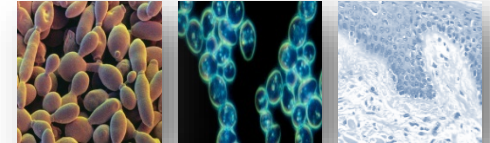
# AC DermaPeptide Toning PF

Anti-Wrinkle + Toning + Elasticity



# AC DermaPeptide Toning PF

---



## Technical Information

**Code:** 20455PF

**INCI Name:** Water & Yeast Extract

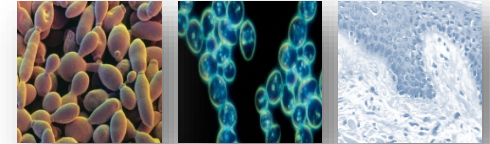
**Status:** Conforms

**Suggested Use Levels:** 2.0 – 5.0%

**Suggested Applications:** Anti-wrinkle, Toning, Elasticity

# Who is using Yeast Extract?

---



Crabtree & Evelyn<sup>®</sup>

PHYTOMER

LANCÔME  
PARIS

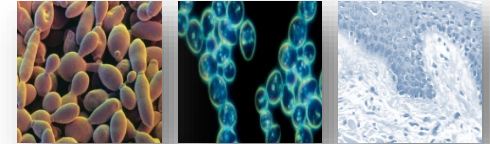
# Crabtree and Evelyn: English Honey and Peach Blossom Glistening Face Serum

## Product Description:

Crabtree & Evelyn English Honey and Peach Blossom Glistening Face Serum leaves a healthy glow to your complexion with nourishing natural fruit extracts and hydrating hyaluronic acid. Yeast extract from blue agave leaves naturally hydrates and strengthens your moisture barrier while the gel-like texture spreads easily and absorbs quickly to lend a luminous finish to your skin.

## Ingredients:

**Water** (aqua)(eau), Propanediol, Glycerin, Polyacrylate, Crosspolymer-6, Honey (mel)(miel) Extract, Prunus Persica (peach) Flower Extract, Citrus Aurantium Dulcis (orange) Peel Extract, Cinnamomum Camphora (camphor) Branch/leaf Extract, Coco Nucifera (coconut) Fruit Extract, Rosa Damascena Flower Extract, Dipteryx Odorata Seed Extract, Citrus Aurantifolia (lime) Peel Extract, Citrus Grandis (grapefruit) Fruit Extract, Vitis Vinifera (grape) Fruit Extract, Pyrus Malus (apple) Fruit Extract, Rubus Ideaus (raspberry) Fruit Extract, Prunus Armeniaca (apricot) Fruit Extract, Chondrus Crispus Extract, **Yeast Extract**, Polysorbate 80, Polysorbate 20, Decylene Glycol, 1,2-Hexanediol, Trisodium Ethylenediamine Disuccinate, Biosaccharide Gum-1, T-Butyl Alcohol, Gluconolactone, Citric Acid, Ethylhexylglycerin, Sodium Hyaluronate, Sodium Hydroxide, Limonene, Phenoxyethanol, Sodium Benzoate, Potassium Sorbate, Yellow 6 (CI 15985), Yellow 5 (CI 19140), Red 4 (CI 14700), Red 33 (CI 17200), Green 5 (CI 61570), Blue 1 (CI 42090)



Tomorrow's vision... Today!®

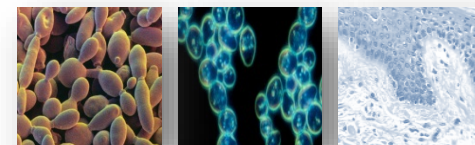
# PHYTOMER: Accept Neutralizing Cleanser

## Product Description:

Designed for sensitive skin that is prone to reactions, PHYTOMER Accept Neutralizing Cleanser gently refreshes the complexion. The formula calms skin with a low tolerance for regular skin care products. This neutralizing cleanser also helps rejuvenate damaged cells while gently removing makeup and other impurities. With calming ingredients, this cleanser is gentle enough for even the most sensitive skin.

## Ingredients:

**Water**, Caprylic/Capric Triglycerides, Coco Caprylate/Caprates, Dipropylene Glycol, Paraffinum Liquidum (Mineral Oil), Peg-20 Methyl Glucose Sesquistearate, Methyl Glucose Sesquistearate, Tromethamine, Sorbitol, Tromethamine, Carbomer, Methylparaben, Acrylates/C10-30 Alkyl Acrylate Crosspolymer, Parfum (Fragrance), Dipotassium EDTA, Hexamidine Diisethionate, Corallina Officinalis Extract, Propylene Glycol, Phenoxyethanol, Chlorphenesin, **Faex (Yeast) Extract**, Tocopherol, Hexyl Cinnamal, Hydroxyisohexyl 3-Cyclohexene Carboxaldehyde, Hydroxycitronellal, Linalool, Benzyl, Benzoate, Butylphenyl Methylpropional



Tomorrow's vision... Today!®

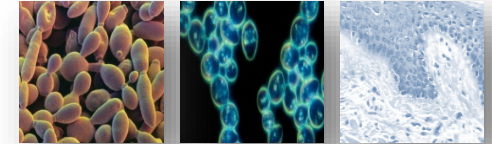
# Lancôme: Exfoliance Confort Exfoliating Cream for Dry Skin

## Product Description:

Formulated with honey, almond and yeast extracts plus microspheres to remove dry spots. The creamy formula helps to leave skin feeling smooth, comfortable and clean.

## Ingredients:

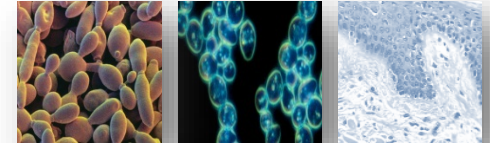
Aqua / **Water** / Eau, Butyrospermum Parkii Butter / Shea Butter, Glycerin, Dimethicone, Polyethylene, Paraffin, Paraffinum Liquidum / Mineral Oil / Huile Minerale, Glyceryl Stearate, PEG-100 Stearate, Sodium Laureth Sulfate, Acrylates Copolymer, Ci 17200 / Red 33, Tocopherol, Cyclodextrin, Sodium Hydroxide, Hydroxyethylcellulose, Phenoxyethanol, Stearic Acid, Faex Extract / **Yeast Extract** / Extrait De Levure, Polysorbate 60, Palmitic Acid, Mel / Honey / Miel, Mannitol, Isobutane, Alpha-Isomethyl Ionone, Carbomer, Disodium Succinate, Cetyl Alcohol, Methylparaben, Prunus Amygdalus Dulcis Protein / Sweet Almond Protein, Hexyl Cinnamal, Glycine Soja Oil / Soybean Oil, Parfum / Fragrance



Tomorrow's vision... Today!®

# AC DermaPeptide Toning PF

---



## Technical Information

**Code:** 20455PF

**INCI Name:** Water & Yeast Extract

**Status:** Conforms

**Suggested Use Levels:** 2.0 – 5.0%

**Suggested Applications:** Anti-wrinkle, Toning, Elasticity