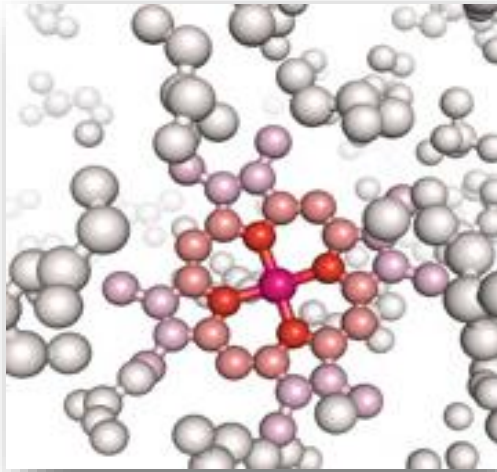


AC Cashmere Protein PF

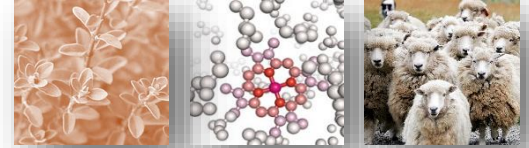
Moisturize + Condition + Protect



Tomorrow's Vision... *Today!*[®]

AC Cashmere Protein PF

Technical Information:



Product Code: 20584PF

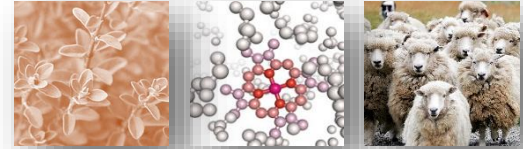
INCI Name: Hydrolyzed Wool

INCI Status: Conforms

Suggested Use Levels: 2.0-5.0%

Suggested Applications: Moisturize, Condition, Protect

Who's Using Hydrolyzed Wool?



Physician's Formula

Rimmel

New York Color

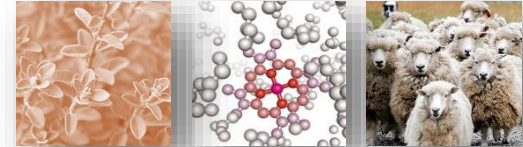
Physician's Formula: Cashmere Wear Ultra Smoothing Blush

Product Description:

Ultra-luxurious powder with the classic look and feel of cashmere leaves skin feeling smooth, soft and nourished. Pearlescent bronze and gold are delicately woven together to deliver a rich, warm glow. Skin radiates with a youthful bronze glow that lasts all day.

Ingredients:

Talc. Mica. Octyldodecyl Stearoyl Stearate. Silica. Dimethicone. Zinc Stearate. Capryloyl Glycine. Undecylenoyl Glycine. Sodium Hyaluronate. **Hydrolyzed Wool**. Nylon-12. Dimethiconol. Lauroyl Lysine



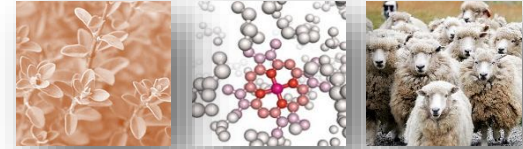
Rimmel: Extra Wow Lash

Product Description:

Visibly progressive volume up to 12X. Oversized brush makes it easy to build soft to dramatic looks. Lash building formula for highly defined lashes without the clumps.

Ingredients:

Water (Aqua) , Paraffin , Glyceryl Stearate , Copernicia Cerifera (Carnauba) Wax , PVP , Cera Alba (Beeswax) , Tribehenin , Propylene Glycol , Polysorbate 20 , Stearic Acid , Acrylates Copolymer , Panthenol , Caprylyl Glycol , Hydroxyethylcellulose , Tocopheryl Acetate , Talc , Sodium Hydroxide , Ascorbyl Glucoside , Calcium Aluminum Borosilicate , Gossypium Herbaceum (Cotton) Powder , **Hydrolyzed Wool** , Serica (Silk Powder) , Retinyl Palmitate , HDI/Trimethylol Hexyllactone Crosspolymer , Acrylates/Carbamate Copolymer , Hydrogenated Vegetable Oil , Silica , Glycerin , Hydrogenated Olive Oil , Olea Europaea (Olive) Fruit Oil , Ethylene/Methacrylate Copolymer , Collagen , Prunus Armeniaca (Apricot) Kernel Oil , Colloidal Gold , Saccharomyces Platinum Ferment , Saccharomyces Silver Ferment , Ceramide 2 , Hydrolyzed Keratin , Olea Europaea (Olive) Oil Unsaponifiables , Sodium Sulfate , Isopropyl Titanium Triisostearate , Phalaenopsis Lobbi Extract , Potassium Sorbate , Phenoxyethanol , Bambusa Arundinacea (Bamboo) Leaf Extract , Sodium Benzoate , Tocopherol , Chlorphenisen , Sorbic Acid , May Contain (+/-): , Carmine (CI 75470) , Chromium Hydroxide Green (CI 77289) , Chromium Oxide Greens (CI 77288) , D&C Black 2 (CI 77266) , Ferric Ferrocyanide (CI 77510) , Iron Oxides (CI 77491, CI 77492, CI 77499) , Mica , Titanium Dioxide (CI 77891) , Ultramarines (CI 77007)



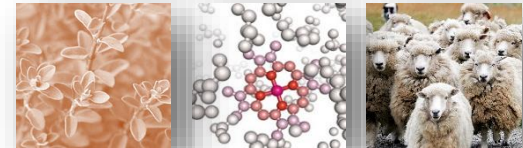
New York Color: City Curls Curling Mascara

Product Description:

Up to 60% lift with dramatic curl. Curl Xpress Technology immediately lifts lashes up to 60%. DuoPlay complex with Panthenol & Vitamin E strengthens lashes and keeps them supple. Intense pigments for ultimately dark lashes. Flake-proof. Smudge-proof. Suitable for sensitive eyes and contact lens wearers.

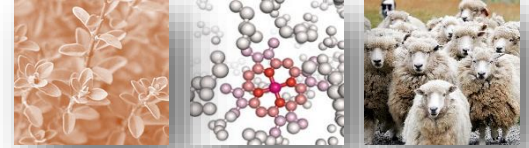
Ingredients:

Aqua/Water/Eau, Paraffin, Glyceryl Stearate, Cera Carnauba/Copernicia Cerifera (Carnauba) Wax/Cire De Carnauba, PVP, Cera Alba/Beeswax/Cire D'Abeille, C18-36 Acid Triglyceride, Propylene Glycol, Polysorbate 20, Stearic Acid, Acrylates Copolymer, Panthenol, Caprylyl Glycol, Hydroxyethylcellulose, Tocopheryl Acetate, Talc, Sodium Hydroxide, Ascorbyl Glucoside, Calcium Aluminum Borosilicate, Gossypium Herbaceum (Cotton) Powder, **Hydrolyzed Wool**, Serica/Silk Powder/Poudre De Soie, Retinyl Palmitate, HDI/Trimethylol Hexyllactone Crosspolymer, Acrylates/Carbamate Copolymer, Hydrogenated Vegetable Oil, S1uca, Glycerin, Hydrogenated Olive Oil, Olea Europaea (Olive) Fruit Oil, Ethylene/Methacrylate Copolymer, Collagen, Prunus Armeniaca (Apricot) Kernel Oil, Colloidal Gold, Saccharomyces/Platinum Ferment, Saccharomyces/Silver Ferment, Ceramide 2, Hydrolyzed Keratin, Olea Europaea (Olive) Oil Unsaponifiables, Sodium Sulfate, Isopropyl Titanium Triisostearate, Phalaenopsis Lobbi Extract, Potassium Sorbate, Phenoxyethanol, Bambusa Arundinacea Leaf Extract, Sodium Benzoate, Tocopherol, Chlorphenesin, Sorbic Acid, May Contain: Carmine (CI 75470), Chromium Hydroxide Green (CI 77289), Chromium Oxide Greens (CI 77288), D&C Black 2 (CI 77266), Ferric Ferrocyanide (CI 77510), Iron Oxides (CI 77491, CI 77492, CI 77499), Mica, Titanium Dioxide (CI 77891), Ultramarines (CI 77007).



AC Cashmere Protein PF

Technical Information:



Product Code: 20584PF

INCI Name: Hydrolyzed Wool

INCI Status: Conforms

Suggested Use Levels: 2.0-5.0%

Suggested Applications: Moisturize, Condition, Protect