



ACB Bio-Chelate 5 *in-vivo* Hair Smoothing

info@activeconceptsllc.com • Phone: +1-704-276-7100 • Fax: +1-704-276-7101

Materials and Methods

Hair efficacy was performed employing ACB Bio-Chelate 5, a mineral glycopeptide complex containing Mg, Fe, Zn, Cu, and Si. Scanning Electron Microscopy (SEM) was utilized to observe the surface architecture of the hair strands. Energy Dispersive Analysis of X-Rays (EDAX) was used to determine the elemental composition of the hair below the surface.

Results

EDAX studies confirmed penetration of magnesium and silicon. The EDAX scan (Figure 1) shows the untreated controls in red and the ACB Bio-Chelate 5 treated samples as a black superimposed line. European blonde hair tresses were damaged by a 2x-bleach/wave process followed by a 30-50 % elongation of the individual hair fibers in order to stimulate excessive chemical and physical damage. Three fibers were cut into equal halves to produce six hair strands. Three hair strands functioned as the test materials, while the remaining three functioned as controls. The three damaged test fibers were treated with 100% ACB Bio-Chelate 5 and allowed to dry. Analysis of the treated fibers by SEM (Figure 2) demonstrated a smoothing of the hair cuticle, without a surface buildup of the treatment product.

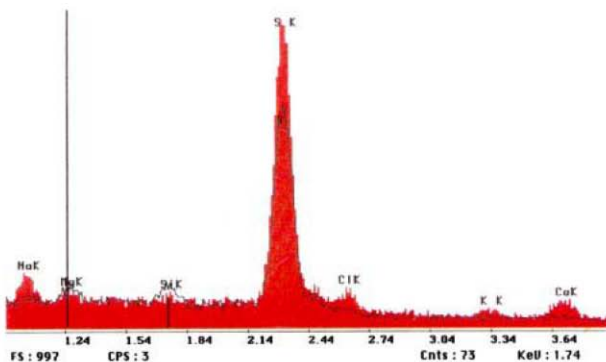


Figure 1: Elemental Composition by EDAX analysis

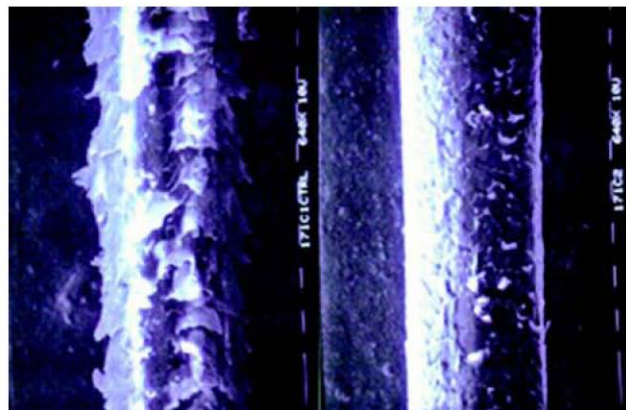


Figure 2: Scanning Electron Microscopy

Information contained in this technical literature is believed to be accurate and is offered in good faith for the benefit of the customer. The company, however, cannot assume any liability or risk involved in the use of its chemical products since the conditions of use are beyond our control. Statements concerning the possible use of our products are not intended as recommendations to use our products in the infringement of any patent. We make no warranty of any kind, expressed or implied, other than that the material conforms to the applicable standard specification.